

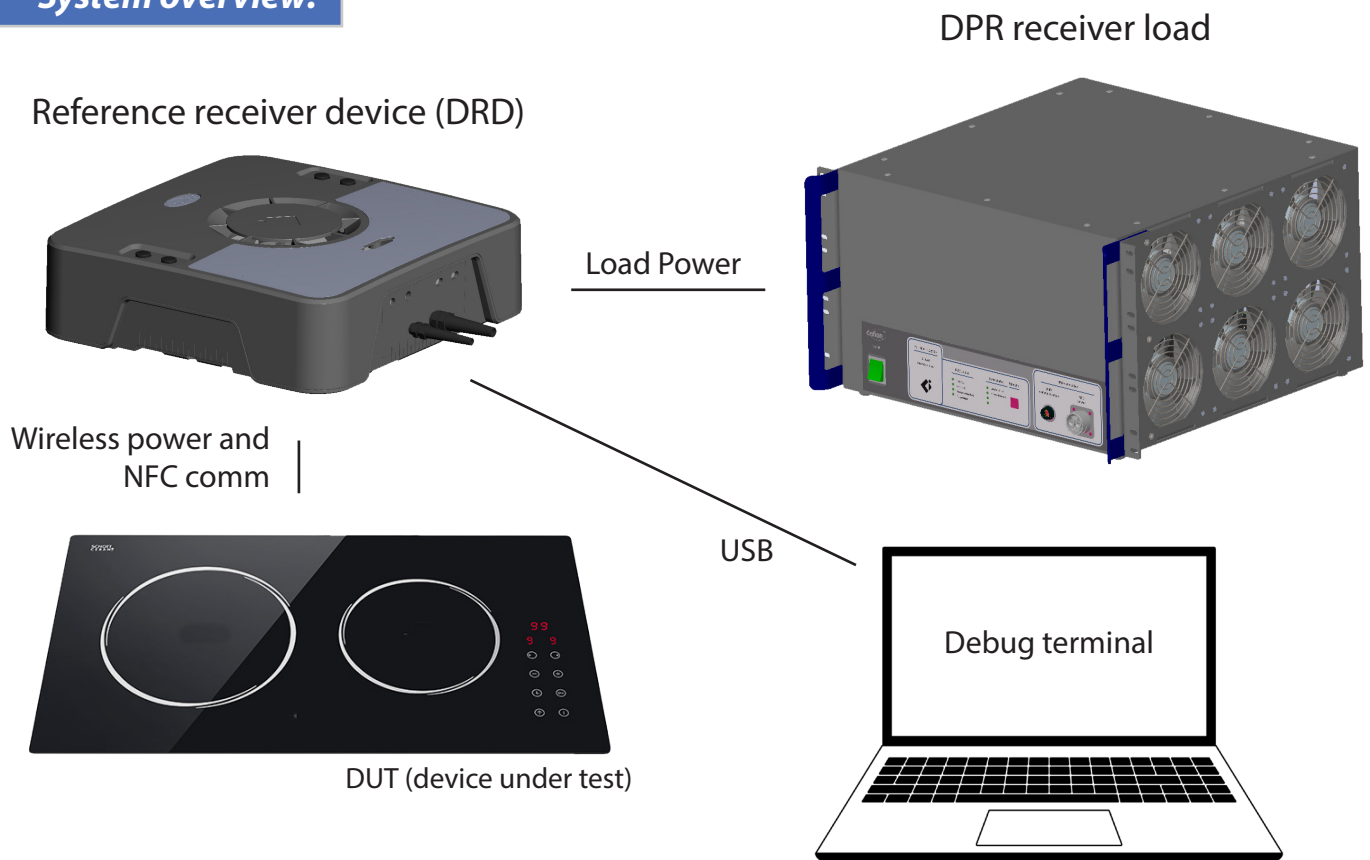


The Ki development power receiver to support the development of Ki Cordless Kitchen hobs

Key Features:

- Ki reference load levels & load steps
- LED Interface PTx and PRx Status
- Ki power load from 0 to 2200W
- Realtime data output:
- USB debug and logging interfaces
- Ki protocol
- Manual control load levels
- Power measurement

System overview:

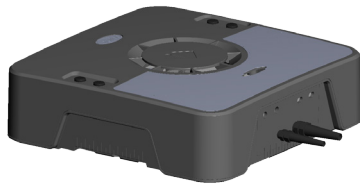




Ki Development Power Receiver



Highlights:



- 8 models of development receiver devices according to Ki
- NFC power harvesting measurement
- Analog measurement interface

Easy to use interface with LED status —

High speed USB PC interface for control. —



Specification:

Input specification	
Mains input voltage (nominal)	220 - 240VAC
Mains input frequency	50 / 60 Hz
Mains input power (max)	100W
Load specification	
Receiver frequency	20 - 74 kHz
General specification	
User interface	LED status indicators on front panel
Analog interfaces	<ul style="list-style-type: none"> - V supply - VLDS - VHV ext - ATX detect - LDS enable - 3x GPIO
Digital interfaces	USB debug and communication interfaces
Protections	<ul style="list-style-type: none"> - Over temperature - Over voltage - Low input voltage - Load disconnect
Mechanical specification	
Weight	Receiver load unit - 20 kg / 44 lbs DRD receiver unit - 3 kg / 6.6 lbs
Dimensions (HxWxD)	Receiver load unit - 246 x 420 x 420 mm DRD receiver unit - 267 x 267 x 70 mm
Cooling method	Active air cooling - speed regulated
Mounting	Rackmount or desktop use
Environmental specification	
Temperature range (operating)	0 - 40 °C
Temperature range (storage)	-20 - 80 °C
Ingress protection degree	IP20

Sales contact: Mr. P. Cuperus - sales@defion.nl / +31 620 964 519

© 2024 - Defion BV - www.defion.nl